



InnoScan® AutoLoader

24-slide autoloader scanner
for high throughput applications

► InnoScan® AutoLoader models 700AL & 900AL

Confocal fluorescence scanner

**Fast, flexible and competitive
24 slides in a single run**



FEATURES

**Designed for high-throughput
applications**

**Simultaneous 2-color scanner
for all standard slides**

**Confocal PMT detection and
real-time autofocus system**

**Fully automated image
acquisition and analysis**

- 24-slide autoloader system
- Affordable price, low maintenance
- Smallest footprint for laboratory space saving
- Very fast scanning system: 24 microarrays in less than 100 minutes (for dual colors at 10 um pixel size)
- High resolution acquisition system: scans spot sizes from 200 um to less than 10 um (with the model InnoScan 900AL)
- Real-time image acquisition (accurate signal detection for a variety of samples: DNA, protein microarrays, tissue or cell arrays)
- Ultra-low background noise and high sensitivity
- Uniform scanning across the whole microarray surface whatever the substrate (glass and plastic)
- Not sensitive to shocks, vibrations and slide deformation
- Delivered with Mapix® software: an immediate and easy data acquisition and image analysis software
- Automatic spot recognition and powerful image analysis
- Software for various OS environments (Linux, Windows®)
- Ethernet interface allows easy data sharing (scanner can be shared over network by several users)



CARBONNE - France
tel : +33 561 971 974
fax : +33 561 971 975
contact@innopsys.fr / www.innopsys.fr

Research Use Only



Reliable and easy-to-use autoloader scanner

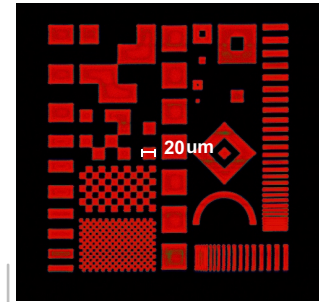
Its small footprint, high performances and robustness make it a perfect investment for routine labs with different applications (Gene expr., mutations or SNP, aCGH, ...)

► Specifications - InnoScan® 700 AL and InnoScan® 900 AL

Please see also the specifications of InnoScan 700 and InnoScan 900

Optical system

Laser	Laser diode
Excitation wavelength	635 nm and 532 nm
Laser	Adjustable (2 laser power available)
Gain PMT	Linear from 0 to 100%
Autofocus	Real-time
Detection	Real confocal and digital PMT
Pixel size	From 3 to 40 µm (model InnoScan 700AL) From 1 to 40 µm (model InnoScan 900AL)
Dynamic range	> 10 ⁴
Sensitivity	0.1 fluor. / µm ²
Uniformity	< 5% CV



Scanned with InnoScan 900 at 1 µm pixel

Autoloader Function

Capacity	24 slides
Load/unload time	< 5 sec.
Total integration in MAPIX® software (Available with the batch mode)	
24 microarray loader separated from the scanning area	



24-slide AutoLoader

Interface & Software

Interface	ethernet
Image format	TIFF (16 bits grey scale)
Analysis image	yes (accurate grid positioning, reliable calculations and export results)

General

Sample	All standard microscope slide 25x75 mm ² / 1x3 "
Scanning area	22x70 mm ²
Scanning time	3,5 min. per slide ⁽²⁾
Scanning speed	from 10 to 35 lines/sec. (Limited to 20 lines/sec. for pixel size ≤ 2 µm)
Barcode reader	Yes
Power supply	88-264 VAC
Dimension (LxDxH)	333x600x416 mm ³ 13.2x23.7x16x4 inch ³
Weight	27 Kg (58.5 lbs)

Class I laser product

MAPIX® software



Image parameter (zoom, image setting, batch mode ...)

Image acquisition (prescan, scan with histogram)

Image analysis (import GAL file, gridding, quantification, plots and data export)

(1): 2-color simultaneous acquisition at 10 µm pixel size